

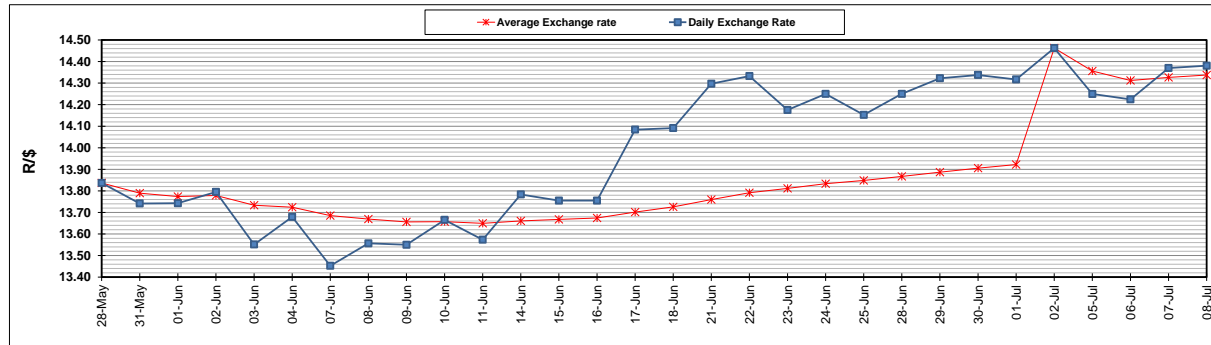
	PETROL 95 ULP	PETROL 93 ULP & LRP	DIESEL 0.05%	DIESEL 0.005%	ILL. PAR.
GAUTENG PUMP PRICE (SA c/l) AS FROM 07/07/2021	1,739.000	1,720.000	-	-	-
WHOLESALE PRICE (SA c/l) AS FROM 07/07/2021	-	-	1,508.620	1,512.020	913.488
SINGLE NATIONAL MAXIMUM RETAIL PRICE	-	-	-	-	1,150.000
BASIC FUEL PRICE - 08/07/2021 (SA c/l)	798.603	783.123	742.025	744.953	721.558
PRESS RELEASE CONTRIBUTION TO BFP 07/07/2021 - 08/07/2021 (SA c/l)	743.170	734.170	721.630	725.030	700.128
UNIT OVER/(UNDER) RECOVERY - 08/07/2021 (SA c/l)	(55.433)	(48.953)	(20.395)	(19.923)	(21.430)
AVERAGE BASIC FUEL PRICE 02/07/2021 - 08/07/2021	814.492	800.599	758.669	761.722	736.439
AVERAGE UNIT OVER/(UNDER) RECOVERY 02/07/2021 - 08/07/2021	(86.922)	(83.829)	(62.239)	(61.292)	(57.911)

### ANALYSIS MOVEMENT OF AVERAGE OVER/(UNDER) RECOVERY

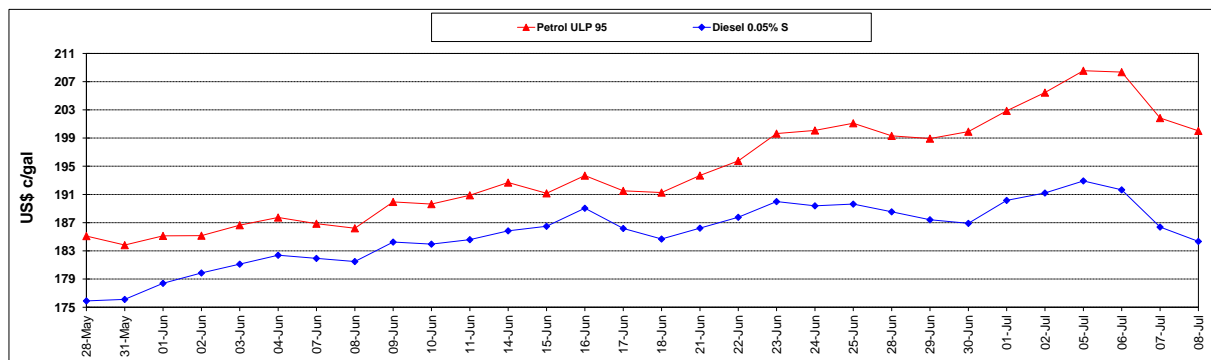
	PETROL 95	PETROL 93	DIESEL 0.05%	DIESEL 0.005%	ILL. PAR.
- MOVEMENT IN INTERNATIONAL PRODUCT PRICES	(63.312)	(60.622)	(40.248)	(39.212)	(36.564)
- MOVEMENT IN EXCHANGE RATE	(23.610)	(23.207)	(21.991)	(22.080)	(21.347)
AVERAGE UNIT OVER/(UNDER) RECOVERY 02/07/2021 - 08/07/2021	(86.922)	(83.829)	(62.239)	(61.292)	(57.911)

### R/\$ EXCHANGE RATE - (R/\$14.3808- 08/07/2021)

#### EXCHANGE RATE USED IN BASIC FUEL PRICE



#### INTERNATIONAL PRODUCT PRICES OF BASKET USED IN BASIC FUEL PRICE



#### BASIC FUEL PRICE IN SA CENTS PER LITRE

